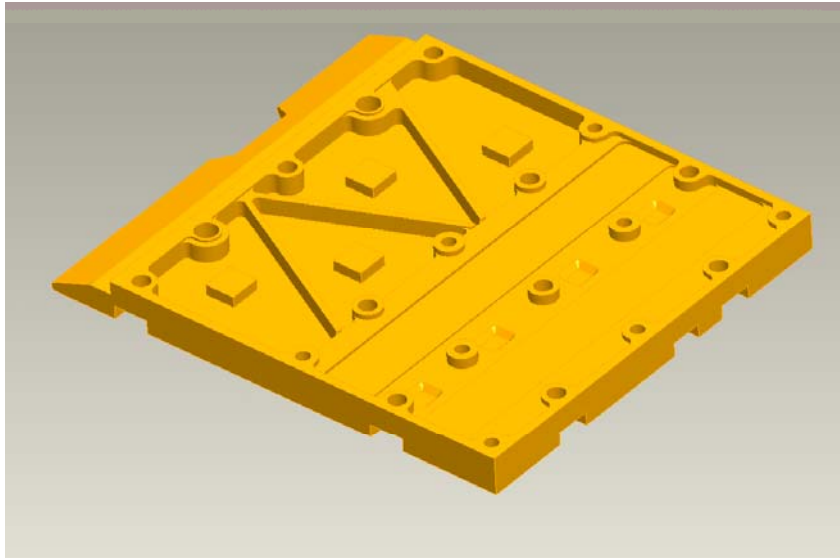


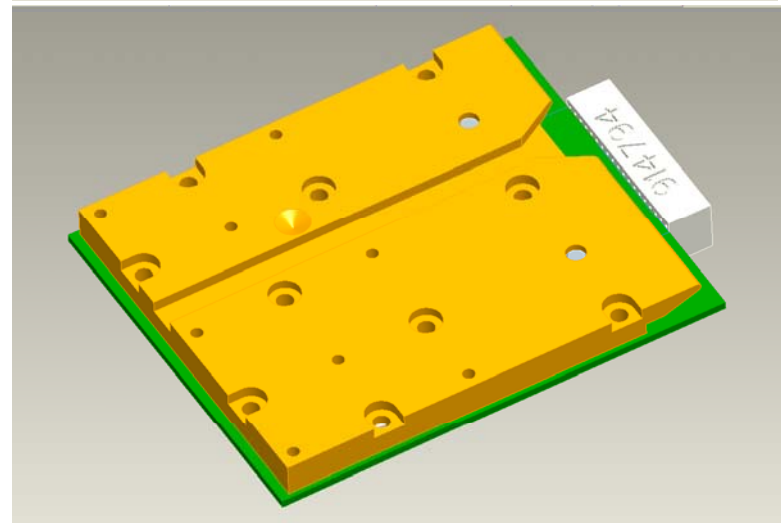
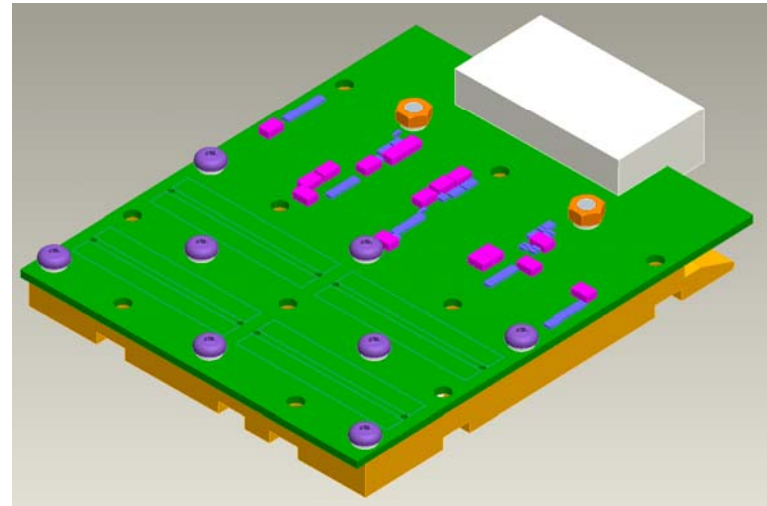


Status of Electronics Module



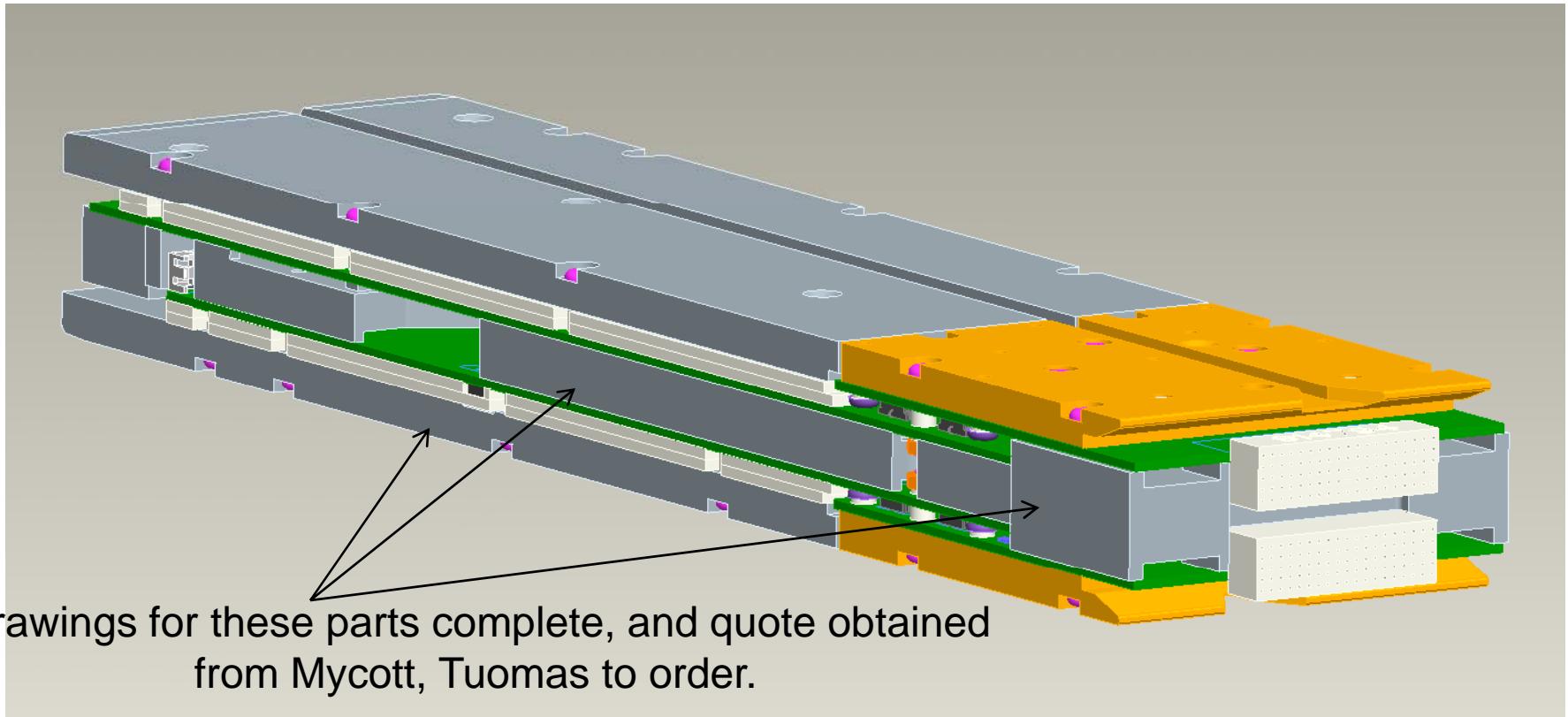
20 Heatsink units, locating pins and washers now on site.

(Senar provided an extra unit Free of Charge)





Status of Electronics Module



Drawings for these parts complete, and quote obtained from Mycott, Tuomas to order.

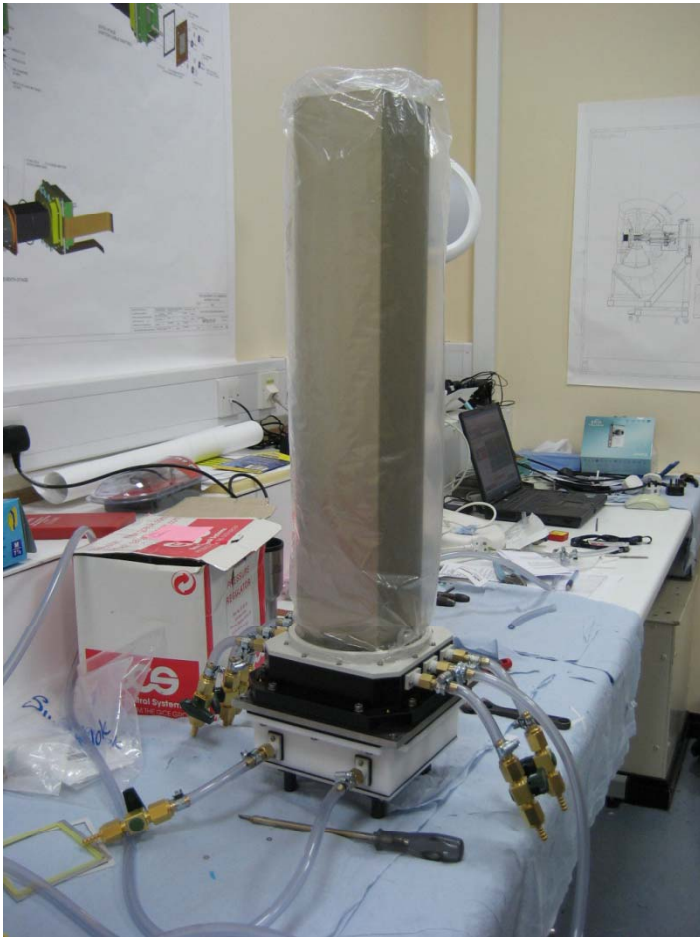
Templates for the cutting of the Dow Corning form to be produced and manufactured.

Fasteners to be ordered.



AIDA

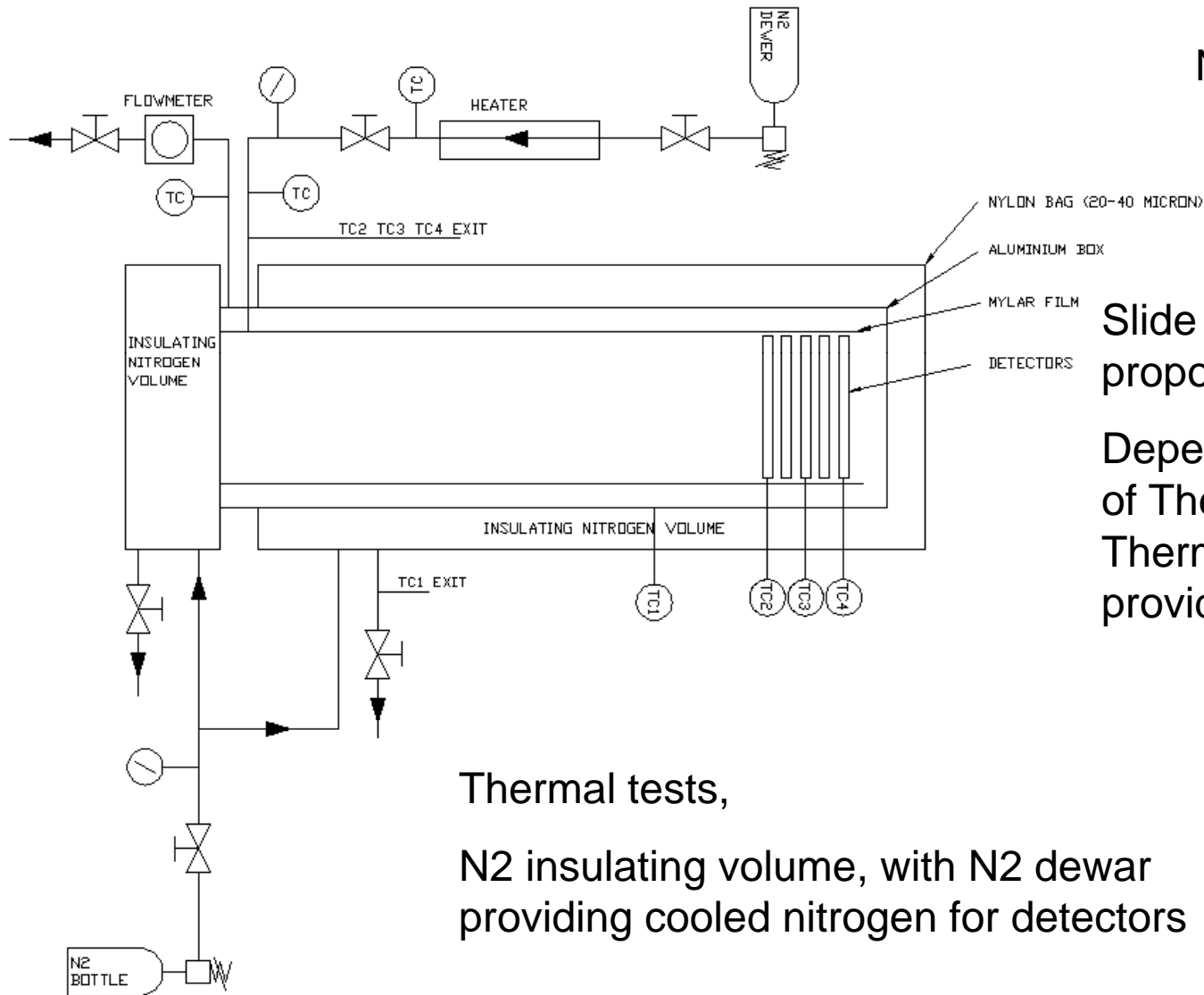
Status of Detector Mechanics



Mechanically constructed

Paul has ordered the required fittings for the gas flow regions and checked that pressure is successfully held.

Currently Shrikant is preparing PT100s and a controller so that we can monitor temperature when we try to cool the unit.



Nitrogen insulated

Slide is a reminder of proposed tests.

Depending upon delivery date of ThermoCube we may use ThermoCube or Dewar to provide cooling.

Thermal tests,
N2 insulating volume, with N2 dewar
providing cooled nitrogen for detectors



AIDA

This is the unit that will be used to cool the nitrogen gas.

Dave is currently ordering this unit through Liverpool University direct from the states.

As they are not on Liverpools supplier list, we currently waiting for the required paperwork to be put in order.

THERMOCUBE™ 300 A
COMPACT 300 WATT PRESSURIZED GAS TEMPERATURE CONTROLLER

The advertisement features a white, rectangular ThermoCube 300 A unit with a blue control panel on top and a blue and white logo on the front. The unit is set against a background of a snowy mountain range under a blue sky. Below the unit, there is a list of features and applications.

WHY CHOOSE THERMOCUBE 300 A?

- COMPACT SIZE
- PRECISE TEMPERATURE CONTROL, EVEN NEAR AMBIENT
- FOR USE WITH CDA, N₂, O₂, AR OR OTHER INERT GASSES
- VERY ENERGY EFFICIENT
- WHISPER-QUIET

APPLICATIONS

- MICROENVIRONMENT TEMPERATURE CONTROL
- KINETICS EXPERIMENTS
- OPTICS BENCHES

Solid State
CODLINE SYSTEMS
Precision Gas Control

30 Pleasant View Road, Pleasant Valley, NY 12568... Tel: 945-635-5500... Fax: 945-635-4001... www.sccooling.com



Status of Detector Support

Dave has now drawn all parts.

Am currently checking drawings prior to requesting quotes/work.

Expect Some parts to be made out, e.g. cooling plates, perhaps baseframe.

Other parts to be made at Liverpool Workshop, Assembly at DL.

Query – Jumo chiller is suggested to cool the water to the electronics modules. Is this really required or can cooling be done through MSUs water system?

